

Quadco is the Pioneer & Leader in the Industry for over 30 years. Many copy but none can match the Quality & Performance of Quadco Cutting Tools.

Scan one of the contacts below to get in touch with a member of our Cutting Tools team!



Dan Webb



Gary Gorscak



Keith Hicks



Chris Dorman



Slavo Birka



**ADVANTAGE SERIES SAW TEETH**

New Tooth Technology to Reduce Your Operating Cost | Greater Impact Durability in Low Abrasion Conditions

QRX103R2	QRX233R2	QRX333R2	QRX150R2	QRX24R2	QRX96R2	QRX31R2
Interchange with QH10103T	Interchange with Q10233T	Interchange with Q11333T	Interchange with QH10150T	Interchange with QK10024T	Interchange with QH10096T	Interchange with QK100031T
PART NO.	DESCRIPTION	KERF	SHANK LENGTH	SHANK DIAMETER	BOLT SIZE	
<b>NO-SHANK</b>						
QRX103R2	QRX Tooth No-Shank	2"	N/A	N/A	3/4" NF	
QRX233R2	QRX Tooth No-Shank	2 5/16"	N/A	N/A	1" NF	
QRX333R2	Beaver Tooth No-Shank	2 7/16"	N/A	N/A	1" NF	
<b>ONE-PIECE</b>						
QRX150R2	QRX ToothLong Shank	2"	1 1/2"	1"	1/2" NF	
QRX24R2	QRX ToothLong Shank	2 3/8"	2"	1.234"	5/8" NF	
<b>TWO-PIECE</b> <small>Note: Crown Teeth require 1 1/2" longer bolt</small>						
QRX96R2	QRX Tooth Crown	2"	N/A	N/A	1/2" NF	
	Shank Option(s)					
	QH10067T 3/4" Short   QH10068T 1 1/2" Long					
QRX31R2	QRX Tooth Crown	2 3/8"	2"	1.234"	5/8" NF	
	Shank Option(s)					
	QK10023T 2" Long					

QUADCO MAKES A FULL LINE OF SAW DISC ASSEMBLIES INCLUDING HEAVY DUTY, REVERSIBLE, STANDARD, AND WIDE & NARROW KERF TO FIT ANY SAW HEAD. CALL WITH YOUR SAW DISC SPECIFICATIONS TO MATCH ONE-PIECE OR SEGMENTED DISC COMPONENTS!

**SAW DISCS**

**ONE-PIECE DISCS**

**DEEP GULLET DISC**

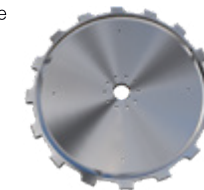
- Deep Gullet design (*patented*) provides larger chip pockets reducing plugging and increasing cutting efficiency
- Deep pocket design allows chips to flow away from the tooth with less resistance, reducing component wear, and lowering operating costs

- Optimum tooth mounting angle reduces tooth loading, increasing disc strength and life
- Flange Plate built into the disc
- Two-Year/4,000-Hour Warranty Pro-Rated



**STANDARD ONE-PIECE DISC**

- Optimum tooth mounting angle reduces load per tooth while promoting maximum disc and tooth life
- Two-Year/4,000-Hour Warranty Pro-Rated



**SEGMENTED DISCS**

**TWO-LEG FULL COVER | REVERSIBLE HOLDER**

Symmetrical holder design allows for numerous capabilities, including the ability to easily repair impact or wear damage by rotating the holder 180°

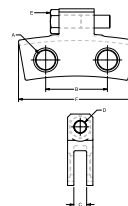


Use Sleeves For Corresponding Holder Dim A

SIZE	SLEEVES
1 1/2"	Q10014 & Q10015
1 1/4"	QH10197 & QH10198
1"	QH10015 & QH10016

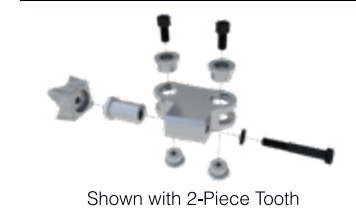
Tooth Holder Guide

HOLDER	DIM A	DIM B	DIM C	DIM D	DIM E	DIM F
Q10165	1"	3 1/2"	7/8"	3/4"	3/4"	7.47"
QH10248	1 1/4"	3 1/2"	7/8"	3/4"	3/4"	7.087"
QH10234	1 1/4"	3 1/2"	7/8"	3/4"	3/4"	7.517"
Q10176	1 1/2"	4.827"	1"	1"	1"	10.22"
Q10330	1 1/2"	4.827"	1"	1"	1"	9.728"
Q10899	1 1/2"	4.827"	1"	1"	1"	9.142"



**DISC COMPONENT OPTIONS**

**DISC HOLDER ASSEMBLY**



Shown with 2-Piece Tooth

**FLANGE PLATES**



Unique "disc clamping" design

**REVERSIBLE TOOTH HOLDER**

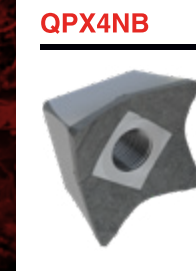


- Fully symmetrical so the tooth can be mounted on either side, allowing the holder to be reversed
- Available to fit shank and no-shank tooth types
- Doubles the life of the holder
- Lowers operating costs

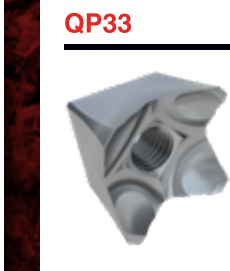
**QUADCO**  
CUTTING TOOLS



Introducing New  
**QP Series Teeth Saw Teeth**



QPX4NB



QP33



QP24K

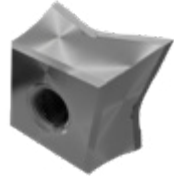
Your Ultimate Source for  
Forestry Cutting Tools & Attachments

Quad Tooth® System | Demand Genuine Quadco

**SAW TOOTH**  
CUTTING TOOL GUIDE

# INDUSTRY LEADING CUTTING PERFORMANCE & LIFE

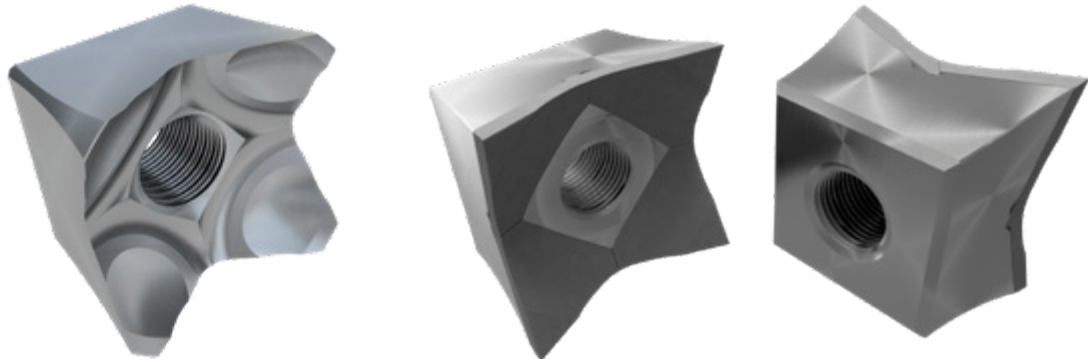
- **New** Durable Carbide Grade to match cutting application
- **More Carbide & Steel** where it counts
- **Longer** wear life hours
- **Lower** operating costs
- **Larger Kerf = More Clearance** to Butt Plate and Saw Disc
- **Quadco Patented "Flare" Design** reduces tooth drag
- **Improved Quadco Patented Carbide Tip** overlap eliminates blowby wear



**NEW QPS SERIES SAW TEETH**

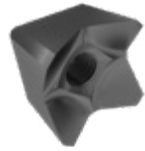
**QP33**

**QPX4NS**

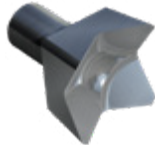


**LEGACY SERIES**

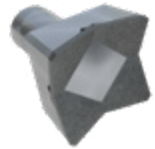
**Q10233T**



**QK10024T**



**QVK4X4B-G1**



**QK10031T**



**PERFORMANCE SERIES**

PART NO.	DESCRIPTION	KERF (NOMINAL SIZE)	SHANK LENGTH	SHANK DIAMETER	BOLT SIZE
<b>NO-SHANK</b>					
QP03H	Performance Tooth No-Shank	2 1/16"	N/A	N/A	3/4" NF
QP23	Performance Tooth No-Shank	2 3/8"	N/A	N/A	1" NF
QP33	Performance Tooth No-Shank	2 1/2"	N/A	N/A	1" NF
QPX4HNB	Performance Tooth Carbide Beaver	2"	N/A	N/A	3/4" NF
QPX4HNS	Performance Tooth Carbide Sharp	2"	N/A	N/A	3/4" NF
QPX4NBD	Performance Tooth Carbide Beaver Durable	2 3/8"	N/A	N/A	1" NF
QPX4NB	Performance Carbide Beaver	2 3/8"	N/A	N/A	1" NF
QPX4NS	Performance Carbide Sharp	2 3/8"	N/A	N/A	1" NF
QPX4KNB	Performance Tooth Carbide Beaver	2 1/2"	N/A	N/A	1" NF
QPX4KNS	Performance Tooth Carbide Sharp	2"	N/A	N/A	1" NF
QPX4KNBD	Performance Tooth Carbide Beaver Durable	2 1/2"	N/A	N/A	1" NF
<b>ONE-PIECE</b>					
QP97	Performance Tooth Short Shank	1 3/4"	0.100"	1"	1/2" NF
QP50H	Performance Tooth Long Shank	2 1/16"	1 1/2"	1"	1/2" NF
QPX4HB	Performance Tooth Carbide Beaver	2"	1 1/2"	1"	1/2" NF
QPX4HBD	Performance Tooth Carbide Durable	2"	1 1/2"	1"	1/2" NF
QPX4HS	Performance Tooth Carbide Sharp	2"	1 1/2"	1"	1/2" NF
QP24K	Performance Tooth Long Shank	2 1/2"	2"	1.234"	5/8" NF
QPX4KB	Performance Tooth Carbide Long Shank	2 1/2"	2"	1.234"	5/8" NF
QPX4KBD	Performance Tooth Carbide Beaver Durable	2 1/2"	2"	1.234"	5/8" NF
QPX4KS	Beaver Tooth Carbide Long Shank Sharp	2 1/2"	2"	1.234"	5/8" NF
<b>TWO-PIECE</b>					
QP96HC	Performance Tooth Crown	2 1/16"	N/A	N/A	1/2" NF
Shank Option(s)	QH10067T 3/4" Short   QH10068T 1 1/2" Long				
QP31KC	Performance Tooth Crown	2 1/2"	N/A	N/A	5/8" NF
Shank Option(s)	QK10023T 2" Long				
QPX4KCB	Performance Tooth Carbide Beaver Crown	2 1/2"	N/A	N/A	5/8" NF
Shank Option(s)	QK10023T 2" Long				

**LEGACY SERIES**

PART NO.	DESCRIPTION	KERF	SHANK LENGTH	SHANK DIAMETER	BOLT SIZE
<b>NO-SHANK CONCAVE</b>					
QH10110T	Concave Tooth No-Shank	2"	N/A	N/A	3/4" NF
Q10205T	Concave Tooth No-Shank	2 1/4"	N/A	N/A	1" NF
<b>NO-SHANK BEAVER</b>					
QH10103T	Beaver Tooth No-Shank	2"	N/A	N/A	3/4" NF
Q10233T	Beaver Tooth No-Shank	2 5/16"	N/A	N/A	1" NF
Q11333T	Beaver Tooth No-Shank	2 7/16"	N/A	N/A	1" NF
<b>NO-SHANK CARBIDE</b>					
QVH4X4NSB-G1	Beaver Tip Tooth No-Shank	1 7/8"	N/A	N/A	3/4" NF
QV4X4NS-G1	Sharp Tip Tooth No-Shank	2 1/4"	N/A	N/A	1" NF
QV4X4NSB-G1	Beaver Tip Tooth No-Shank	2 1/4"	N/A	N/A	1" NF
QV4X4NR-11C	Durable Tip Tooth No-Shank	2 1/4"	N/A	N/A	1" NF
QV4X4NSBK-G1	Beaver Tip Tooth No-Shank Wide Kerf	2 3/8"	N/A	N/A	1" NF
<b>ONE-PIECE CONCAVE</b>					
QK10012T	Concave Tooth Short Shank	1 1/8"	0.38"	0.62"	N/A
QMX10015T	Concave Tooth Short Shank	1 1/8"	0.38"	0.62"	3/8" NC
Q10121T	Concave Tooth Short Shank	1 1/8"	1"	1"	3/8" NC
QH10062T	Concave Tooth Short Shank	2"	1 1/2"	1"	1/2" NF
QH100091T	Concave Tooth Short Shank	1 7/8"	1 3/4"	1"	1/2" NF
Q10001T	Concave Tooth Short Shank	2 1/4"	0.938"	1 1/4"	1/2" NF
Q10097T	Concave Tooth Short Shank	2 7/32"	2"	1 1/4"	1/2" NF
Q10098T	Concave Tooth Short Shank	2 1/4"	2"	1 1/4"	5/8" NF
M1K404T	Concave Tooth Short Shank	2 5/16"	2"	1.234"	5/8" NF
<b>ONE-PIECE BEAVER</b>					
QK10061T	Beaver Tooth Short Shank	1 1/8"	0.38"	0.621"	3/8" SHCS
QMX10020T	Beaver Tooth Short Shank	1 1/8"	0.375"	0.621"	3/8" NC
QH10150T	Beaver Tooth Short Shank	2"	1 1/2"	1"	1/2" NF
QH10078T	Beaver Tooth Short Shank	2"	3/4"	1"	1/2" NF
QH10098T	Beaver Tooth Short Shank	2 1/8"	1 1/2"	N/A	1/2" NF
Q10214T	Beaver Tooth Short Shank	1 5/8"	0.1"	1"	5/8" NF
Q10797T	Beaver Tooth Short Shank	2 1/4"	0.1"	1"	1/2" NF
Q10797EXT	Beaver Tooth Short Shank	1 7/8"	0.1"	1"	1/2" NF
Q10635T	Beaver Tooth Short Shank	1 3/4"	0.1"	1"	3/8" NC
Q10206T	Beaver Tooth Short Shank	1 5/8"	0.1"	1"	3/8" NC
Q10150T	Beaver Tooth Short Shank	2 1/4"	0.938"	1 1/4"	1/2" NF
Q10122T	Beaver Tooth Long Shank	2 1/4"	2"	1 1/4"	1/2" NF
QK10024T	Beaver Tooth Long Shank	2 3/8"	2"	1.234"	5/8" NF
<b>ONE-PIECE CARBIDE</b>					
QVH4X4-1B-G1	Beaver Tip Tooth	1 7/8"	1 1/2"	1"	1/2" NF
QV4X4B-G1	Beaver Tip Tooth	2 1/4"	0.938"	1 1/4"	1/2" NF
QVK4X4B-G1	Beaver Tip Tooth; Wide Kerf	2 1/4"	0.938"	1.249"	5/8" NF
QVK4X4B-11C	Beaver Tip Tooth Durable Carbide; Wide Kerf	2 1/4"	0.938"	1.249"	5/8" NF
QVH4X4-1B-11C	Beaver Tip Tooth Durable Carbide	1 7/8"	1 1/2"	1"	1/2" NF
<b>TWO-PIECE CONCAVE</b> <small>Note: Crown Teeth require 1 1/2" longer bolt</small>					
QH10120T	Concave Tooth Crown	2"	N/A	N/A	1/2" NF
Shank Option(s)	QH10067T 3/4" Short   QH10068T 1 1/2" Long				
Q10105T	Concave Tooth Crown	2 1/4"	N/A	N/A	1/2" NF
Shank Option(s)	Q10106T 0.938" Short; Q10117T 2" Long				
QK10022T	Concave Tooth Crown	2 3/8"	N/A	N/A	5/8" NF
Shank Option(s)	QK10023T 2" Long				
M1M203T	Concave Tooth Crown	2"	N/A	N/A	5/8" NC
Holder Option(s)	M1HBF200 2 1/2" Long				
M1M205T	Concave Tooth Crown	2 5/16"	N/A	N/A	3/4" NC
Holder Option(s)	M1HBF2516 3 1/4" Long				
<b>TWO-PIECE BEAVER</b> <small>Note: Crown Teeth require 1 1/2" longer bolt</small>					
QH10096T	Beaver Tooth Crown	2"	N/A	N/A	1/2" NF
Shank Option(s)	QH10067T 3/4" Short   QH10068T 1 1/2" Long				
Q10094T	Beaver Tooth Crown Cross-Back	2 1/4"	.505"	N/A	1/2" NF
Shank Option(s)	Q10093T 0.938" Short				
Q10136T	Beaver Tooth Crown	2 1/4"	N/A	N/A	1/2" NF
Shank Option(s)	Q10096T 0.938" Short   Q10117T 2" Long				
QK10031T	Beaver Tooth Crown	2 3/8"	N/A	N/A	5/8" NC
Shank Option(s)	QK10023T 2" Long				
M1M233T	Beaver Tooth Crown	2"	N/A	N/A	5/8" NF
Holder Option(s)	M1HBF200 2 1/2" Long				
<b>TWO-PIECE CARBIDE</b> <small>Note: Crown Teeth require 1 1/2" longer bolt</small>					
QVK4X4CB-G1	Beaver Tip Tooth Crown; Wide Kerf	2 3/8"	N/A	N/A	5/8" NF
Shank Option(s)	QK10023T 2" Long				