

Scan one of the contacts below to get in touch with a member of our Cutting Tools team!



Dan Webb



Gary Gorscak



Keith Hicks



Chris Dorman



Slavo Birka



DISC & DRUM ASSEMBLIES

Heavy Duty Disc and Drum Assemblies designed and manufactured to meet your product specifications.

DISC ASSEMBLIES



Tip-to-Tip Dia.: 36" – 60"
Pilot & Bolt Pattern options to match your driveshaft requirements Steel & Carbide Cutting Tool Options

DRUM ASSEMBLIES



Length: 30" – 88"
Tip-to-Tip Dia.: 14" – 26"
Stub Shaft & Bearing Assemblies to match your requirements Steel & Carbide Cutting Tool Options

HOLDER SLEEVES

Holders to match all your Drum and Disc requirements.

QMX10113



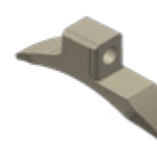
QH10127B



QMX10111



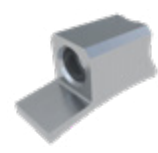
Q10857



Q10675



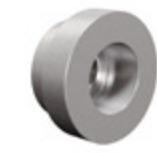
QMX10060



**QH10197
QH10198**

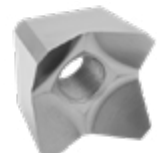


**Q10286C1
Q10286C2**



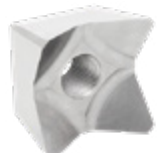
CUTTING TOOLS

Q10233T



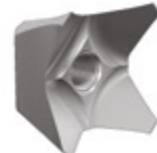
Descr.: Beaver
Kerf: 2 5/16"
Bolt Dia.: 1"
Weight: 1.42 lbs

QH10103T



Descr.: Beaver
Kerf: 2"
Bolt Dia.: 3/4"
Weight: 0.86 lbs

QMX10010T



Descr.: Flare
Kerf: 2 1/4"
Bolt Dia.: 3/4"
Weight: 0.79 lbs

QMX10130



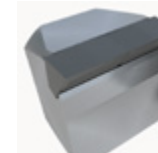
Descr.: Carbide
Kerf: 2"
Bolt Dia.: 3/4"
Weight: 1.46 lbs

QMX10186CT



Descr.: Steel Planer
Kerf: 2"
Bolt Dia.: 3/4"
Weight: 0.98 lbs

QMX10330X



Descr.: Carbide Planer
Kerf: 2"
Bolt Dia.: 3/4"
Weight: 1.36 lbs

Q10590X



Descr.: Carbide
Kerf: 1 1/2"
Bolt Dia.: 3/4"
Weight: 0.84 lbs

QMX10025X



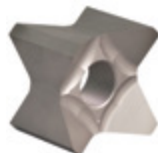
Descr.: Carbide
Kerf: 1 1/8"
Bolt Dia.: 3/8"
Weight: 0.21 lbs

QMX10020T



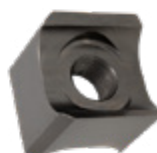
Descr.: Steel
Kerf: 1 1/8"
Bolt Dia.: 3/8"
Weight: 0.20 lbs

Q10639T



Descr.: Steel Beaver
Kerf: 2 5/16"
Bolt Dia.: 1"
Weight: 1.45 lbs

Q11200BT



Descr.: Steel Planer
Kerf: 2 5/16"
Bolt Dia.: 1"
Weight: 1.62 lbs

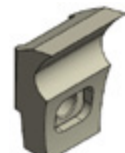
QMX10140T



Descr.: Steel Tri-Tip
Kerf: 3 1/16"
Bolt Dia.: 1/2"
Weight: 1.36 lbs

DENIS CIMAF

Q11246KT



Descr.:
Kerf: "
Bolt Dia.:
Weight:

NORD-LOCK WASHERS



P#: ONLW08
1/2"
P#: ONLW10
5/8"
P#: ONLW12
3/4"
P#: ONLW16
1"

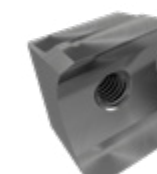


Your Ultimate Source for Forestry Cutting Tools & Attachments

Q10639T



QMX10186CT




QMX10170X



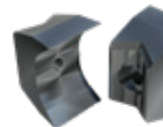


Available for Most Popular Mower & Mulcher Brand Models
Carbide & Steel Type Tools

FECON® / ASV®



PADDLE STYLE

Q10705T  Descr.: Holder Paddle Straight Kerf: N/A Holder/Sleeve: N/A Shank Dia.: N/A Bolt Size: M24 Bolt P#: 01M24200100109 Nut P#: OHNNL-M24	Q11206C  Descr.: Holder Paddle Z-Back Kerf: N/A Holder/Sleeve: N/A Shank Dia.: N/A Bolt Size: 5/8 NF x 1 1/2 Bolt P#: 021018249 Nut P#: OHNNL-M24	Q11098ET  Descr.: Tooth - Wide Steel Woodchuck Kerf: 2" Holder/Sleeve: Q10705T Shank Dia.: 0.999" Bolt Size: 5/8" NF Bolt P#: 02101836 Sleeve/Nut P#: Q11126-B	Q10985CX-2  Descr.: Tooth - Wide Carbide 2-Tip Kerf: 2 1/4" Holder/Sleeve: Q10705T Shank Dia.: 1" Bolt Size: 5/8" UNF Bolt P#: 02101824	Q10985DX-2  Descr.: Tooth - Narrow Carbide 2-Tip Kerf: 1 7/8" Holder/Sleeve: Q10705T Shank Dia.: 1" Bolt Size: 5/8" NF Bolt P#: 02101824	Q10560DX  Descr.: Tooth Carbide 1-Tip Kerf: 1 5/8" Holder/Sleeve: Q10705T Shank Dia.: 1" Bolt Size: 5/8" NF Bolt P#: 02101824	Q10560EX  Descr.: Tooth Carbide Chisel Kerf: 1.5" Holder/Sleeve: Q10705T Shank Dia.: 1" Bolt Size: 5/8" NF Bolt P#: 02101824
---	---	--	---	---	--	---

W-BACK

QMX10150T  Descr.: Tooth Steel Katana Kerf: 2 1/2" Holder/Sleeve: Q11231 Shank Dia.: N/A Bolt Size: 3/4" NF Bolt P#: 02121656 Both QMX10150T & QMX10170X also fit ASV® models.	QMX10170X  Descr.: Tooth Carbide W-Back Kerf: 1 7/8" Holder/Sleeve: Q11231 Shank Dia.: N/A Bolt Size: 3/4" NF Bolt P#: 02121656	QMX10200T  Descr.: Tooth Steel FMX R Kerf: 2 1/2" Holder/Sleeve: N/A Shank Dia.: N/A Bolt Size: 1/2"-13 x 2 3/4" Bolt P#: 020813448
--	--	--






PRINOTH / FECON®

QMX10250T  Descr.: Tooth Steel Planer Kerf: 2 1/2" Holder/Sleeve: N/A Shank Dia.: N/A Bolt Size: M16 Bolt P#: 02M16200040129	Q11239X  Descr.: Tooth Carbide 2-Tip Kerf: 2 1/4" Holder/Sleeve: N/A Shank Dia.: N/A Bolt Size: 3/4" NF Bolt P#: 011216488
---	---

NOKAMIC®

FAE® / CAT®

1-BOLT

Q10935T  Descr.: Tooth Steel Woodchuck Kerf: 2" Holder/Sleeve: Q10936B Shank Dia.: N/A Bolt Size: 3/4" NF Bolt P#: 02121648	Q10987X4B  Descr.: Tooth Carbide 4-Tip Kerf: 1 3/4" Holder/Sleeve: Q10936B Shank Dia.: N/A Bolt Size: 3/4" NF Bolt P#: 02121648	Q10936B  Descr.: Adapter/Holder 1-Bolt FAE / CAT Bolt P#: 02101864 and 02101868 QJD10037 Descr.: Adapter/Holder John Deere Bolt P#: 02101856 and 02101868	Q11236T  Descr.: Tooth Steel Woodchuck Kerf: 2 1/4" Holder/Sleeve: OEM Shank Dia.: 24.9 mm Bolt Size: M14 Bolt P#: 02M14150030129	Q11262T  Descr.: Tooth Steel COBRA Kerf: 2 1/4" Holder/Sleeve: OEM Shank Dia.: 24.9 mm Bolt Size: M14 Bolt P#: 02M14150030129
--	--	--	---	--

C/3 No Adaption Required

2-BOLT

Q11546T  Descr.: Tooth Steel Planer Kerf: 2 1/8" Holder/Sleeve: N/A Shank Dia.: 1.2" Bolt Size: 3/4" Bolt P#: 011210648	Q11545X  Descr.: Tooth Carbide Planer Kerf: 2" Holder/Sleeve: N/A Shank Dia.: 1.2" Bolt Size: 3/4" Bolt P#: 011210648	Q10924BT  Descr.: Tooth Steel Woodchuck Kerf: 2 1/8" Holder/Sleeve: Q11028-B Shank Dia.: N/A Bolt Size: 5/8" NF Bolt P#: 02101840	Q10975X4B  Descr.: Tooth - Narrow Carbide 4-Tip Kerf: 1 3/4" Holder/Sleeve: Q11028-B Shank Dia.: N/A Bolt Size: 5/8" NF Bolt P#: 02101840	Q11028-B  Descr.: Adapter/Holder 2-Bolt FAE / CAT
--	--	--	--	---

RAYCO®

STEEL




Q10971CT  Descr.: Tooth Steel Woodchuck Kerf: 2 1/8" Holder/Sleeve: N/A Shank Dia.: N/A Bolt Size: 5/8" NF Bolt P#: 011018528 and 011018648
--

CARBIDE




Q10971X2  Descr.: Tooth Carbide 4-Tip Kerf: 2" Holder/Sleeve: N/A Shank Dia.: N/A Bolt Size: 5/8" NF Bolt P#: 011018528 and 011018648
--

ASV® / BOBCAT® JOHN DEERE®

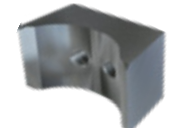

ASV® / JOHN DEERE®

Q10924BT  Descr.: Tooth Steel Woodchuck Kerf: 2 1/8" Holder/Sleeve: Q11187-B Shank Dia.: N/A Bolt Size: 5/8" NF Bolt P#: See Adapter/Holder Info	Q10975X4B  Descr.: Tooth Carbide 4-Tip Kerf: 1 3/4" Holder/Sleeve: Q11187-B Shank Dia.: N/A Bolt Size: 5/8" NF Bolt P#: See Adapter/Holder Info	Q11187-B  Descr.: Adapter/Holder ASV Bolt P#: 02101864 and 02101868 QJD10037 Descr.: Adapter/Holder John Deere Bolt P#: 02101856 and 02101868
---	--	--

BOBCAT®

Q10924BT  Descr.: Tooth Steel Woodchuck Kerf: 2 1/8" Holder/Sleeve: Q11125-B Shank Dia.: N/A Bolt Size: 5/8" NF Bolt P#: See Adapter/Holder Info	Q10975X4B  Descr.: Tooth - Narrow Carbide 4-Tip Kerf: 1 3/4" Holder/Sleeve: Q11125-B Shank Dia.: N/A Bolt Size: 5/8" NF Bolt P#: See Adapter/Holder Info	Q11125-B  Descr.: Adapter/Holder Bobcat Bolt P#: 02101860 and 02101868
--	---	---

BOBCAT® "NEW" DRUM

Q11318T  Descr.: Tooth Steel Woodchuck Kerf: 1 7/8" Holder/Sleeve: OEM Shank Dia.: N/A Bolt Size: 1/2" NF Bolt P#: 02082052 and 02082068	Q11325X4  Descr.: Tooth Carbide 4-Tip Kerf: 1 3/4" Holder/Sleeve: OEM Shank Dia.: N/A Bolt Size: 1/2" NF Bolt P#: 02082048 and 02082064
---	--

QUADCO M32

STEEL

QMX10186CT  Descr.: Tooth Steel Planer Drum Kerf: 2" Holder/Sleeve: N/A Shank Dia.: N/A Bolt Size: 3/4" NF	QH10103T  Descr.: Tooth Steel Beaver Drum & Disc Kerf: 2" Holder/Sleeve: N/A Shank Dia.: N/A Bolt Size: 3/4" NF
--	---

CARBIDE

QMX10240X  Descr.: Tooth Carbide Chisel Drum Kerf: 2" Holder/Sleeve: N/A Shank Dia.: N/A Bolt Size: 3/4" NF	QMX10245X  Descr.: Tooth Carbide Chisel Drum Kerf: 1 3/4" Holder/Sleeve: N/A Shank Dia.: N/A Bolt Size: 3/4" NF	QMX10330X  Descr.: Tooth Carbide Planer Disc Kerf: 2" Holder/Sleeve: N/A Shank Dia.: N/A Bolt Size: 3/4" NF
---	---	---

QUADCO 45 & 56 LAMTRAC®

QUADCO / LAMTRAC Fit Quadco Mowers with S/N QDM45DD108 & QDM56-127 and Up

Q10639T  Descr.: Tooth Steel Beaver Kerf: 2 5/16" Holder/Sleeve: Q11500 and Q10857C Spacer: Q10632T Bolt Size: 1" NF Bolt P#: 09161464 and 011614648	Q11200BT  Descr.: Tooth Steel Planer Kerf: 2 5/16" Holder/Sleeve: Q11500 and Q10857C Spacer: Q11201CT Bolt Size: 1" NF Bolt P#: 09161464 and 011614648	QMX10290X  Descr.: Tooth Carbide Planer Kerf: 2 1/4" Holder/Sleeve: Q11500 and Q10857C Shank Dia.: N/A Bolt Size: 1" NF Bolt P#: 09161464 and 011614648	Q11210X  Descr.: Tooth Carbide 2-Tip Kerf: 2 1/4" Holder/Sleeve: Q11500 and Q10857C Shank Dia.: N/A Bolt Size: 1" NF Bolt P#: 09161464 and 011614568	Q11205X  Descr.: Tooth Carbide 4-Tip Kerf: 2 1/4" Holder/Sleeve: Q10857C Shank Dia.: N/A Bolt Size: 1" NF Bolt P#: 011614568	Q11310X  Descr.: Tooth Carbide 1-Tip Kerf: 2 1/4" Holder/Sleeve: Q11500 and Q10857C Shank Dia.: N/A Bolt Size: 1" NF Bolt P#: 09161464 and 011614568
---	---	--	--	---	---

QUADCO Fit Quadco Mowers with S/N QDM45DD107 & QDM56-126 and Down



Q10639T  Descr.: Tooth Steel Beaver Kerf: 2 5/16" Holder/Sleeve: Q10857 Spacer: Q10632T Bolt Size: 1" NF Bolt P#: 011614648	Q11200BT  Descr.: Tooth Steel Planer Kerf: 2 5/16" Holder/Sleeve: Q10857 Spacer: Q11201CT Bolt Size: 1" NF Bolt P#: 011614608	Q10766BT  Descr.: Tooth Steel Woodchuck Kerf: 2 5/16" Holder/Sleeve: Q10857 Shank Dia.: N/A Bolt Size: 1" NF Bolt P#: 011614608	Q11280X  Descr.: Tooth Carbide 2-Tip Kerf: 2 5/16" Holder/Sleeve: Q10857 Shank Dia.: N/A Bolt Size: 1" NF Bolt P#: 011614568
--	--	--	---

SHINN SYSTEMS

TRI-TIP

QMX10140T  Descr.: Tooth Steel Tri-Tip Kerf: 3 1/16" Holder/Sleeve: N/A Shank Dia.: 1 1/4" Bolt Size: 1/2" NF Bolt P#: 010820488

SQUARE

Q11321X  Descr.: Tooth Carbide 3-Tip Kerf: 3 1/16" Holder/Sleeve: N/A Shank Dia.: 1 1/4" Bolt Size: 1/2" NF Bolt P#: 010820488	Q10150T  Descr.: Tooth Steel 4-Point Kerf: 2 1/4" Holder/Sleeve: N/A Shank Dia.: 1 1/4" Bolt Size: 1/2" NF Bolt P#: 01082048
---	---

Tri-Tip fits current Shinn models, Square fits older models. The Q11321X & Q10150T are not interchangeable with the QMX10140T.